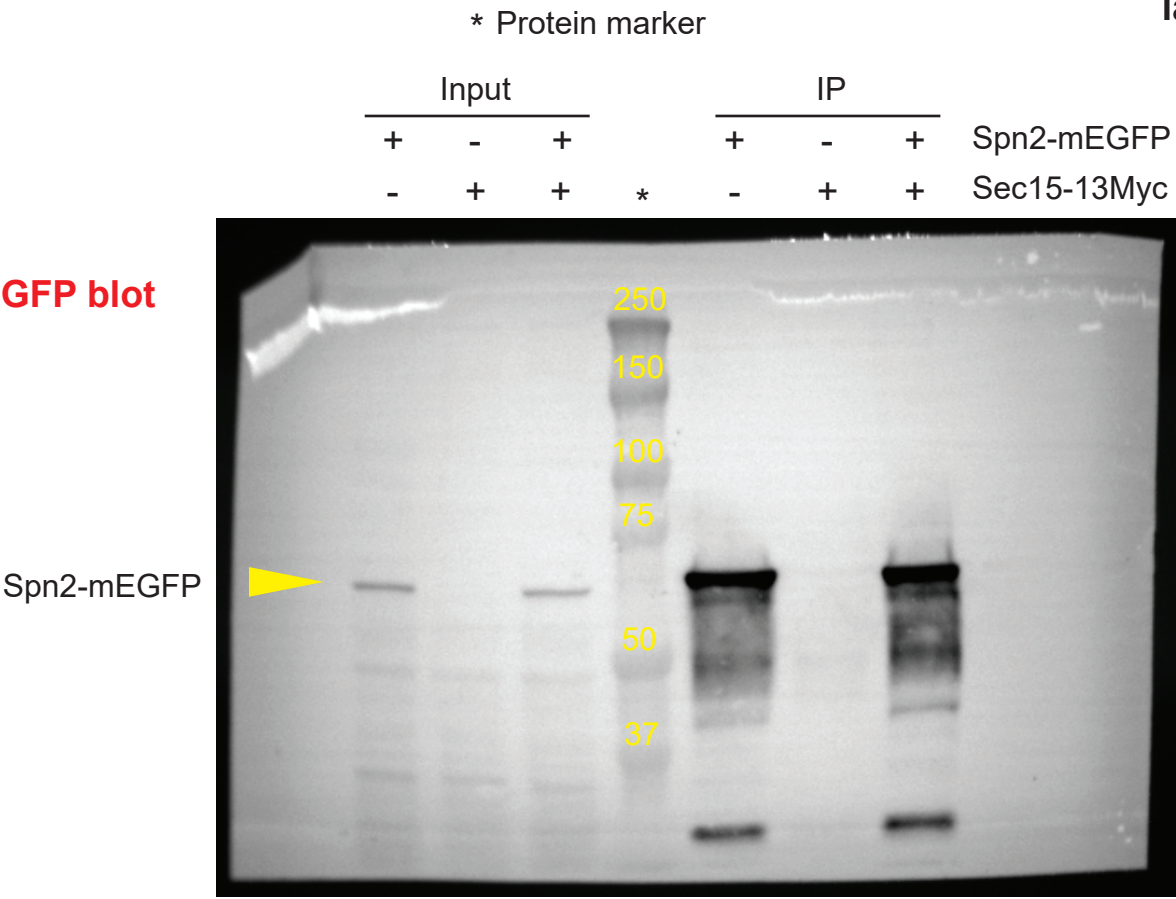


Figure 4 panel A  
labeled



**Note:** White illumination near the edges of the blots are unwanted reflection of liquid from membrane and does not appear in chemiluminisence channel.

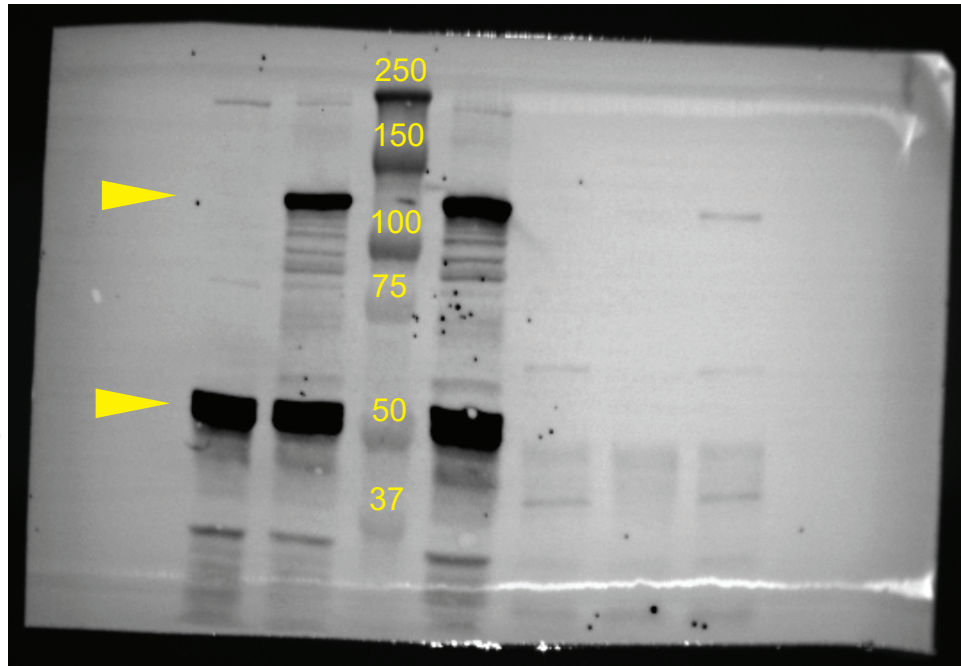
**Figure 4 panel A  
labeled**

\* Protein marker

Input				IP			
+	-		+	+	-	+	Spn2-mEGFP
-	+	*	+	-	+	+	Sec15-13Myc

**Myc blot**

Sec15-13Myc  
  
Tubulin  
(Not used in paper)

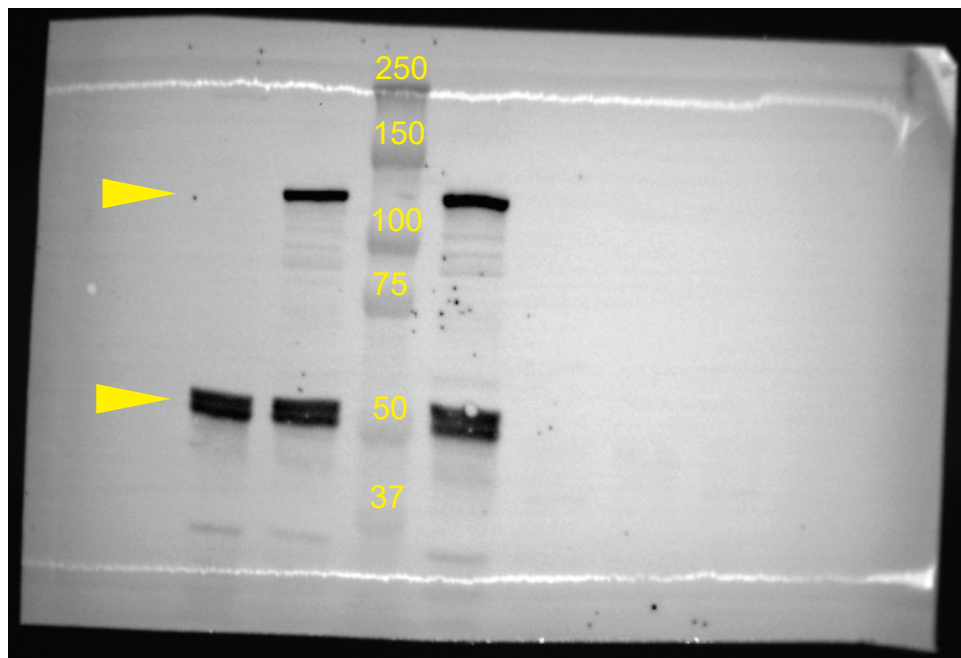


Long exposure

Input				IP			
+	-		+	+	-	+	Spn2-mEGFP
-	+	*	+	-	+	+	Sec15-13Myc

**Myc blot**

Sec15-13Myc  
  
Tubulin



Short exposure

**Note:** White illumination near the edges of the blots are unwanted reflection of liquid from membrane and does not appear in chemiluminescence channel.

Figure 4 panel B  
labeled

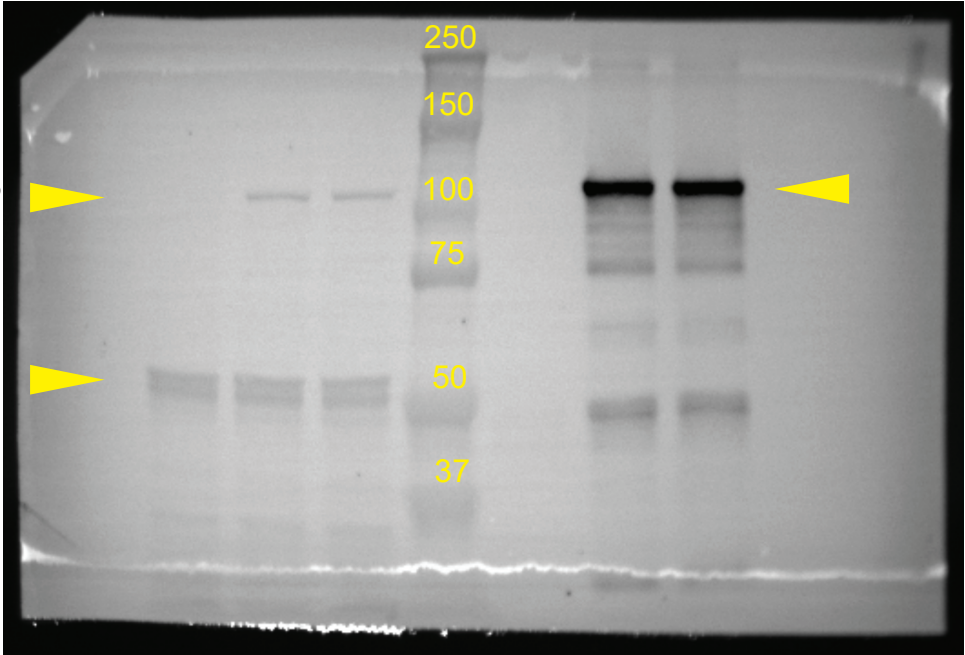
\* Protein marker

Input				IP			
+	-	+		+	-	+	Spn2-13Myc
-	+	+	*	-	+	+	Sec15-mEGFP

GFP blot

Sec15-mEGFP

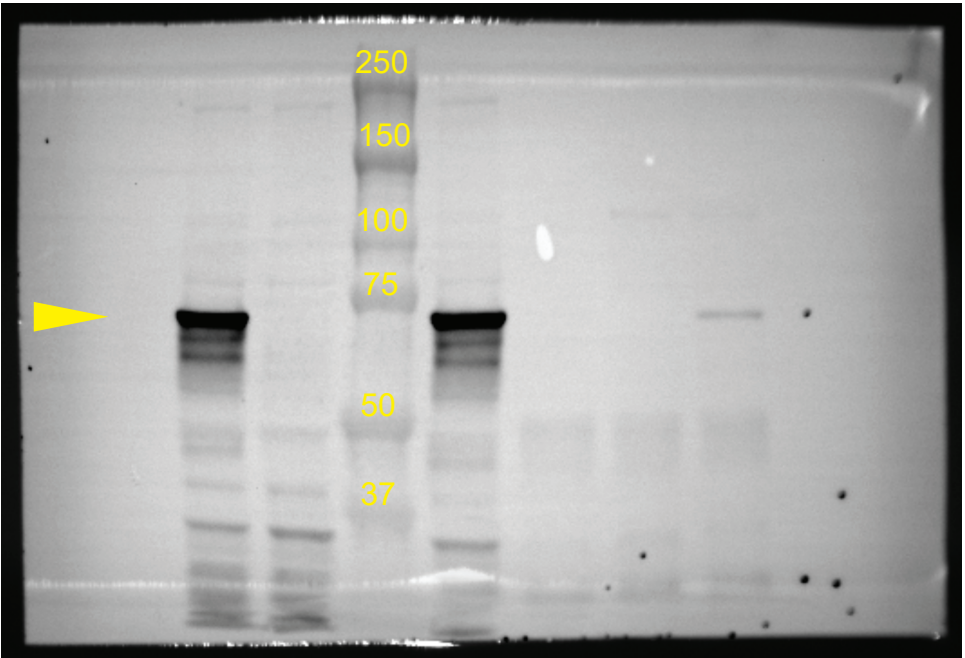
Tubulin



Input				IP			
+	-	+		+	-	+	Spn2-13Myc
-	+	*	+	-	+	+	Sec15-mEGFP

Myc blot

Spn2-13Myc



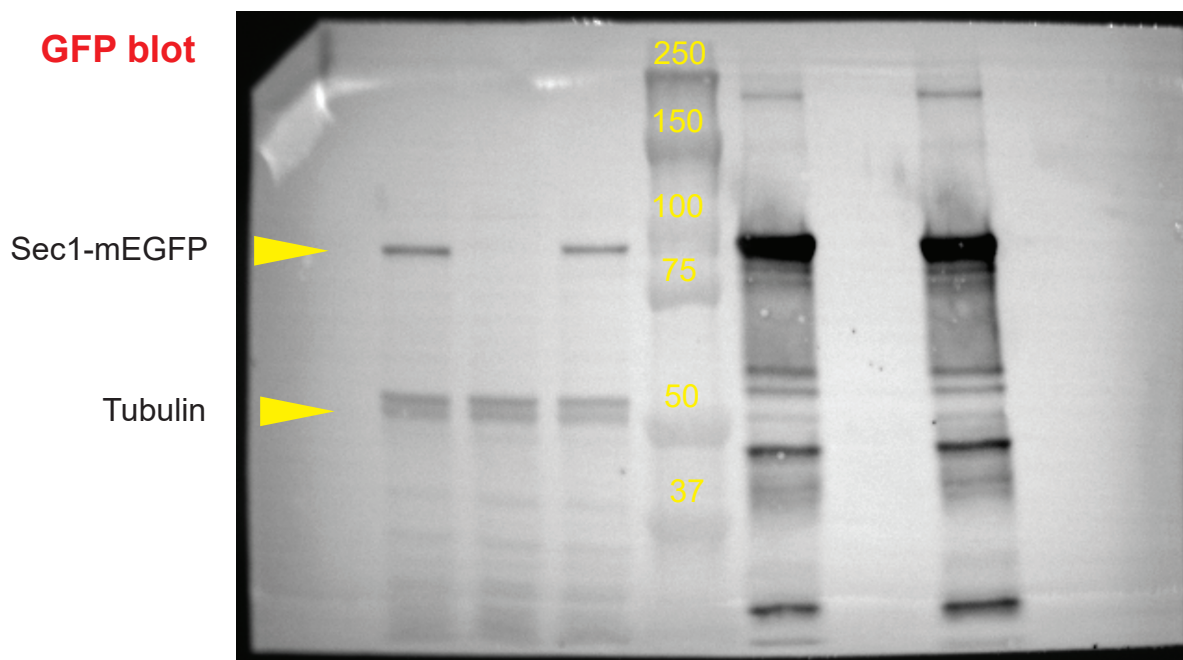
**Note:** White illumination near the edges of the blots are unwanted reflection of liquid from membrane and does not appear in chemiluminisence channel.

**Figure 4 panel C  
labeled**

\* Protein marker

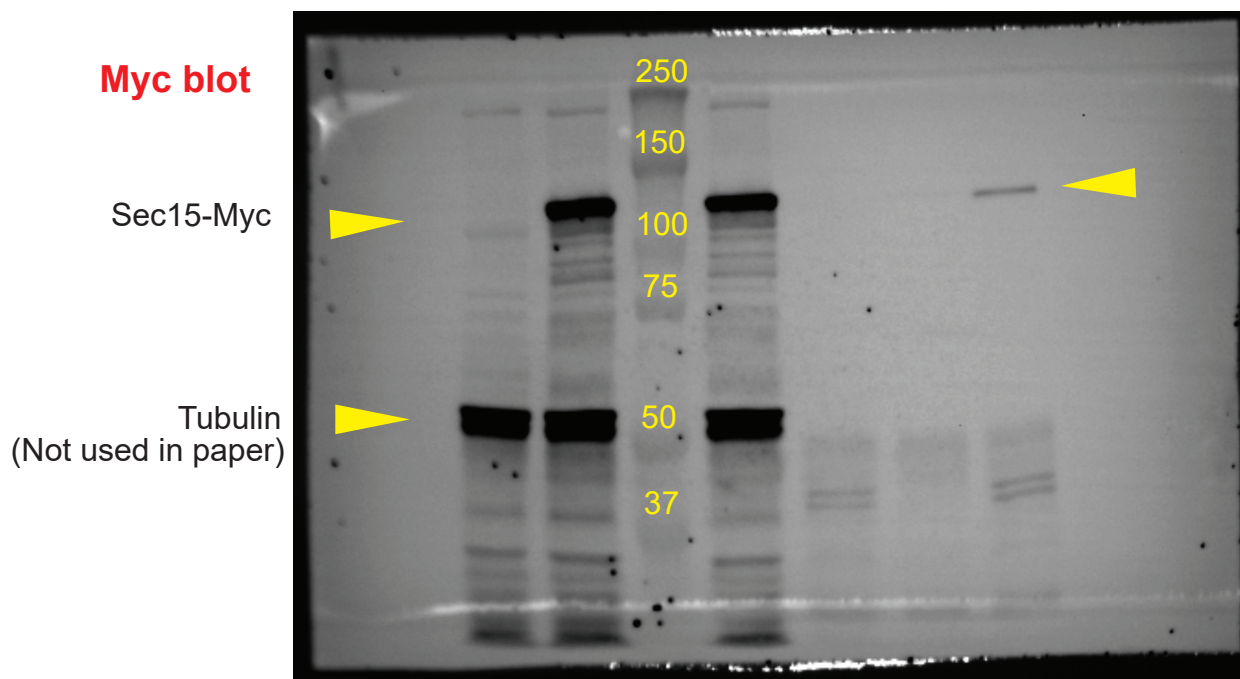
Input				IP				
+	-	+		+	-	+		Spn1-mEGFP
-	+	+	*	-	+	+		Sec15-13Myc

**GFP blot**



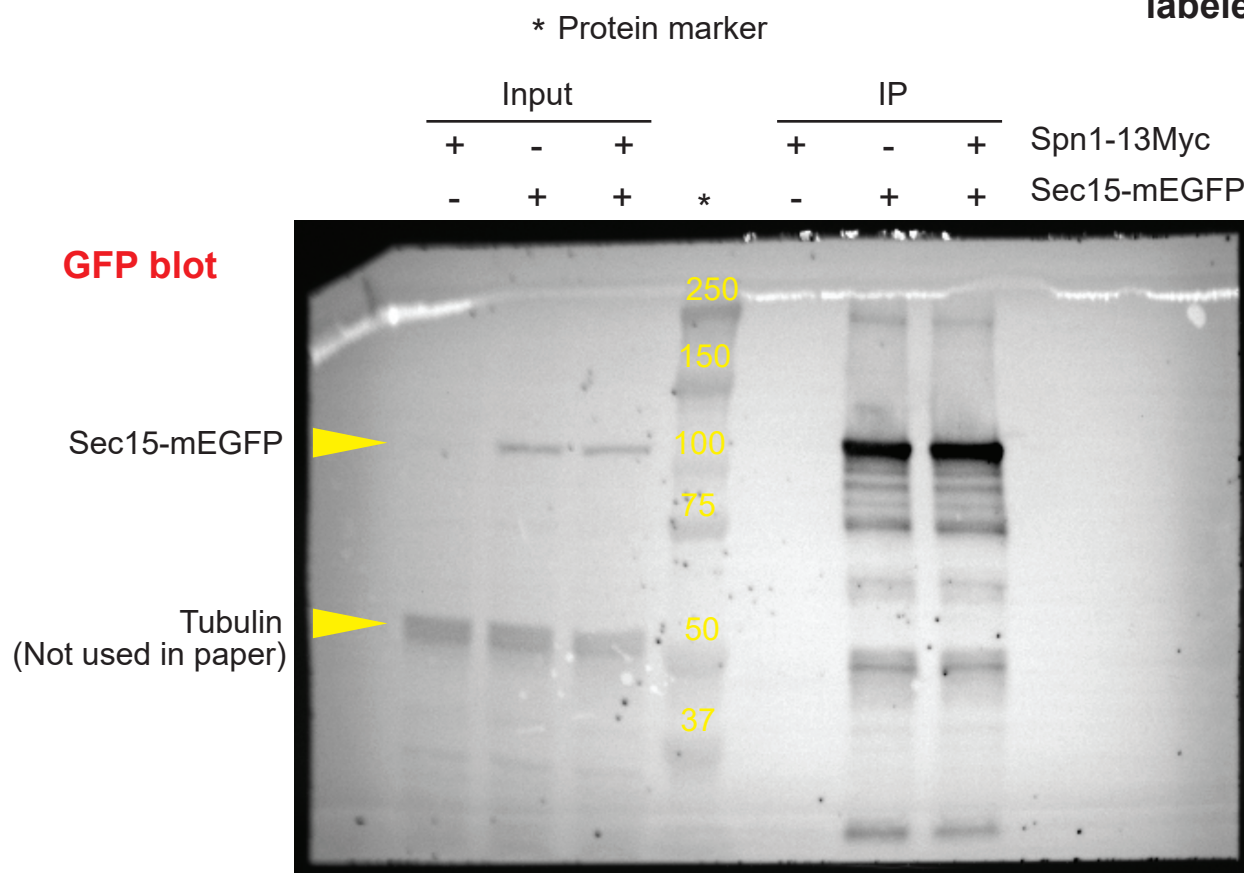
Input				IP				
+	-		+	+	-	+		Spn1-mEGFP
-	+	*	+	-	+	+		Sec15-13Myc

**Myc blot**



**Note:** White illumination near the edges of the blots are unwanted reflection of liquid from membrane and does not appear in chemiluminescence channel.

**Figure 4 panel D  
labeled**

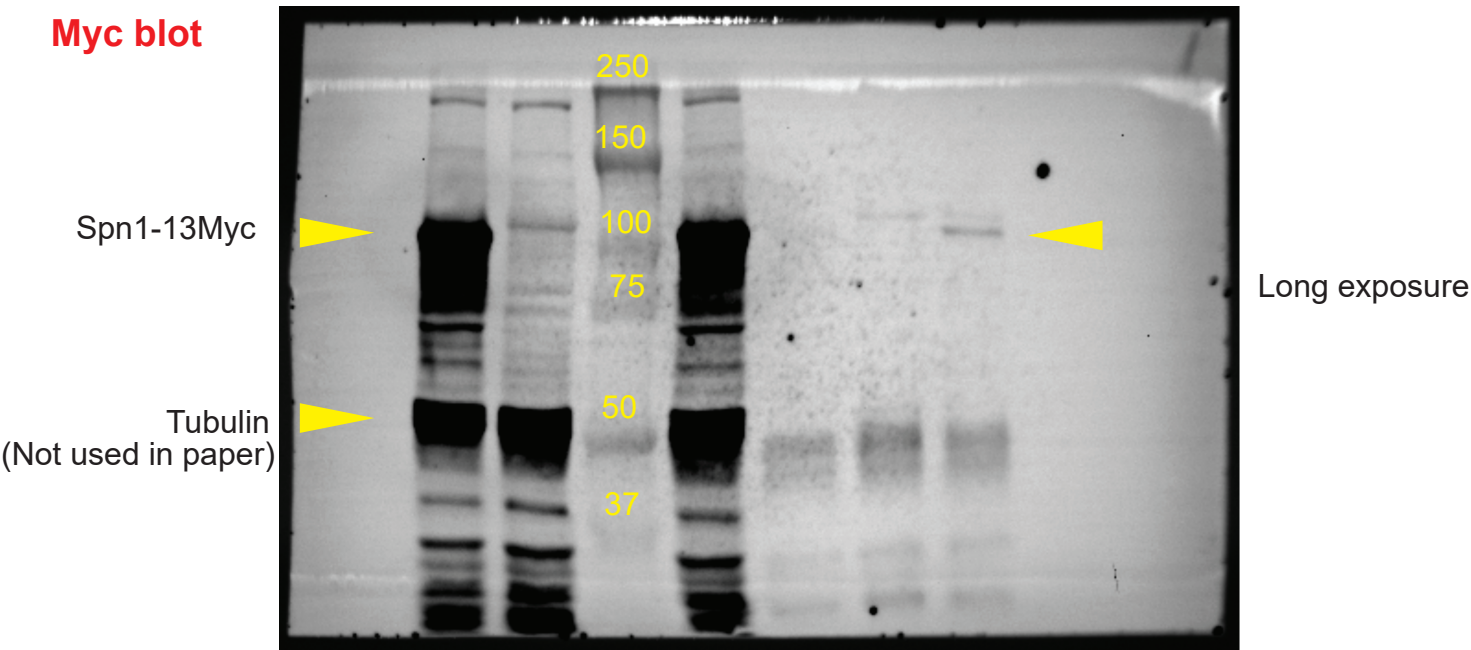


**Note:** White illumination near the edges of the blots are unwanted reflection of liquid from membrane and does not appear in chemiluminisence channel.

**Figure 4 panel D**  
**labeled**

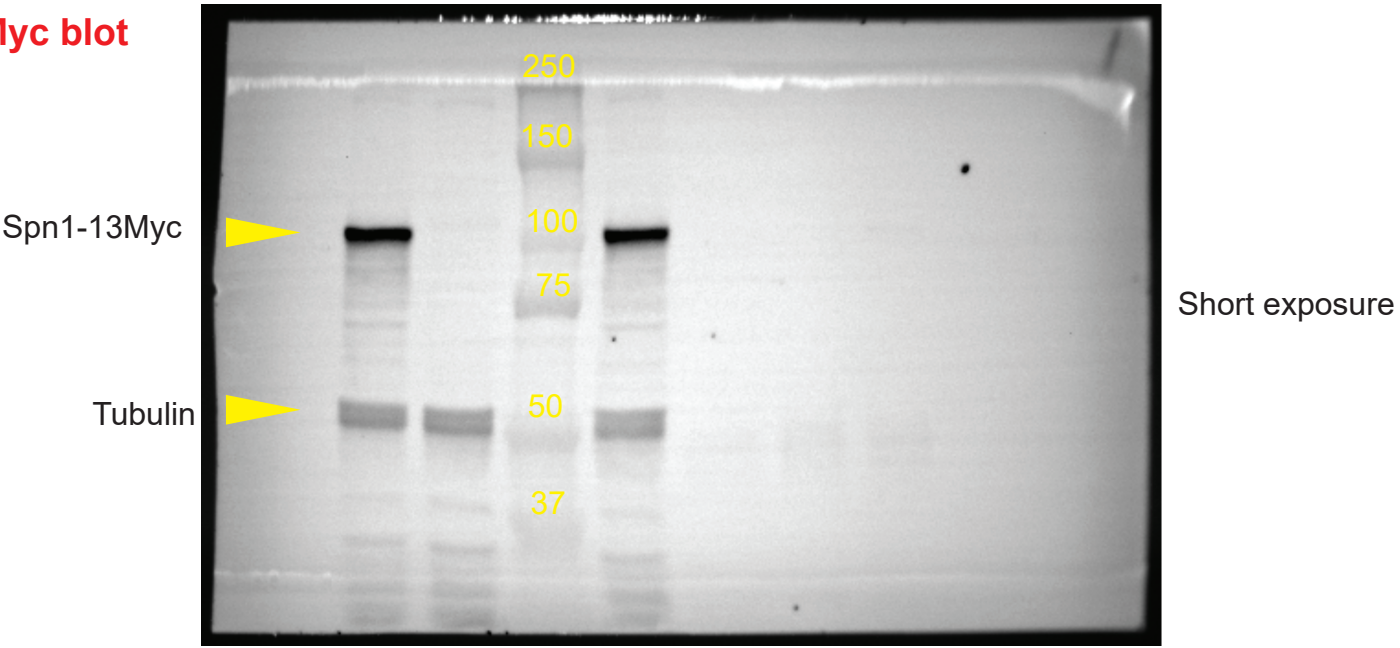
Input				IP			
+	-		+	+	-	+	Spn1-13Myc
-	+	*	+	-	+	+	Sec15-mEGFP

**Myc blot**



Input				IP			
+	-		+	+	-	+	Spn1-13Myc
-	+	*	+	-	+	+	Sec15-mEGFP

**Myc blot**



**Note:** White illumination near the edges of the blots are unwanted reflection of liquid from membrane and does not appear in chemiluminisence channel.